

ORACLE & STELTIX ANZ ROADSHOW 2026

Roadshow Presentation Series

Presented across three locations in June 2026



Melbourne



Monday 15 June 2026



Auckland



Wednesday 17 June 2026



Sydney



Friday 19 June 2026

Thank you for attending

steltix

ORACLE

Oracle & Steltix ANZ Roadshow 2026

Welcome and Opening the Roadshow

Presentation Introduction

Daniel Smith

Managing Director, Steltix APAC

steltix | ORACLE



ANZ Roadshow – You are in Great Company



FISHER & PAYKEL



TREASURY WINE ESTATES



BRICKWORKS
— BUILDING PRODUCTS —



News Corp



Northpower



SCENTRE GROUP



Sponsored by



Oracle & Steltix ANZ Roadshow 2026

Presentation Introduction

Engineering the Modern JD Edwards Experience

From Automation and Adoption to Engineered Performance

Jan Jaap Weerstand

CEO, Steltix



Steltix Global Services

25

Years in operation

800

JDEdwards Customers



ERP & Digital Application Advisory



Software Licencing Advisory



Training



Project Delivery



Managed Services



Cloud Infrastructure



Business Process Accelerators

13

Regional Operations

36

Countries Steltix has deployed JDE

Steltix Business Process Automation Solutions



Appshare Mobility



EInvoice AR&AP



TLX10 SSO/MFA



DropZone Mass Data



Version Workbench



OGL4JDE

steltix

ORACLE



Our Guiding Principals

Steltix.ai



Secure

Clients data is not shared or made available to any public models

Practical

Adoption requires a clear business case and ROI

Governed

Needs to be managed and adhered to existing SDLC / CAB processes

Strategic

We can assist with AI Strategy, frameworks, adoption... no just the technology

Your Domain AI

#	Approach	What changes	Scope
1	Base LLM <i>Pre-trained on broad data</i>	General world knowledge	Everything
2	Fine-tune the LLM <i>Adjust weights on your data</i>	Model behavior & tone	Broad domain
3	Add RAG <i>Retrieve relevant documents</i>	Facts & knowledge	Specific topic
4	Create a skill <i>Persona, format, constraints</i>	Behavior & output style	Task type
5	Add prompt context <i>User data, session state</i>	This specific request	Single turn



Our AI Recipes @ Steltix.AI

1

Discover

Customisation
Discovery /
Analysis



Automate the analysis
and documentation of
your JD Edwards
Customisations

2

Appshare

Create Apps /
Extensions with AI



Create Mobile friendly
applications and
extensions to JD Edwards
using AI

3

AI Studio

Query and Create
Transactions in JD
Edwards



A digital assistant to
assist with general JD
Edwards inquiries and
transaction processing

4

Tara

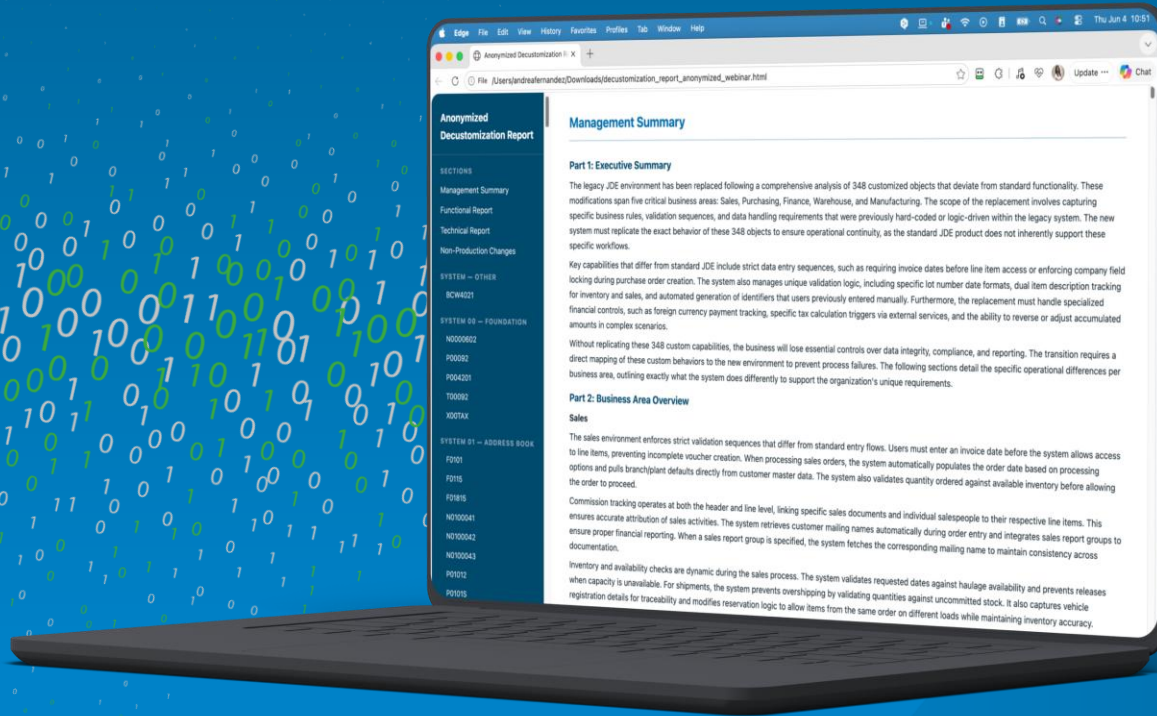
JD Edwards Data
Analysis



Gain insights into your JD
Edwards Data using AI
MCP

1. System Discovery & Documentation

steltix
We connect



steltix

Four Levels of Documentation Automatically Generated



Technical Reference

Developers & Technical Consultants

Field-level diffs, event-rule logic flow, C-source unified diffs, developer / SAR / customer references and object metadata changes.



Functional Description

Business Analysts & Functional Consultants

Plain-English capability per object, business rules JDE doesn't enforce, process controls and validations, with change-ticket cross-references.



Application Management

Application Managers & Module Owners

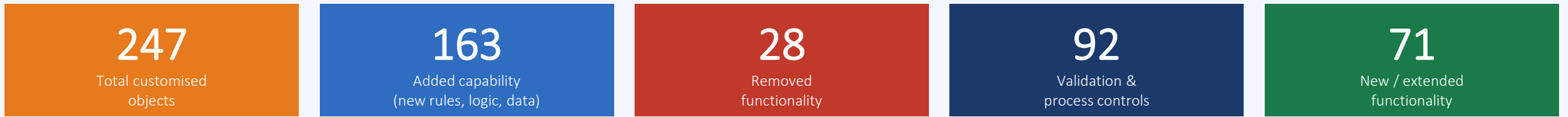
Module-by-module breakdown across Sales, Purchasing, Finance, Warehouse and Manufacturing — what differs and the scope per module.



Executive Summary

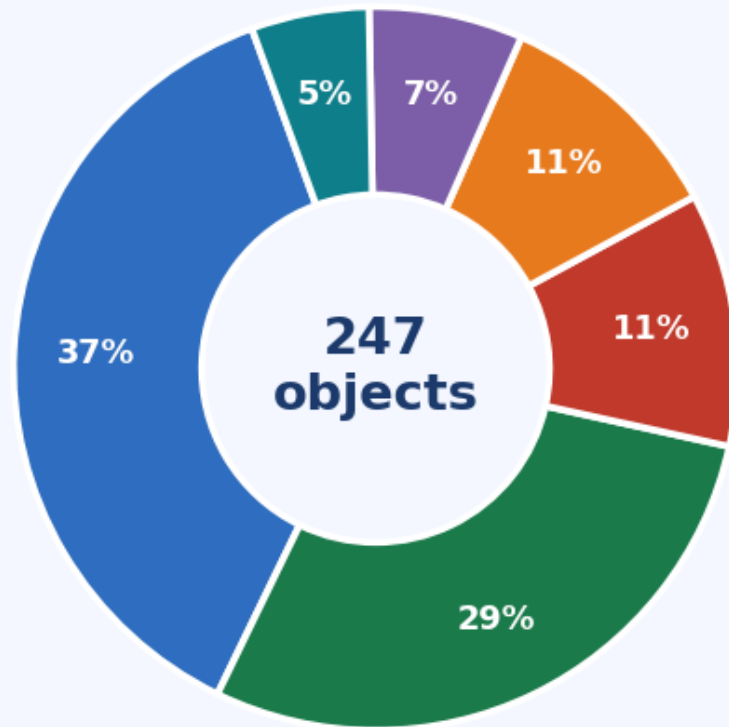
Project Sponsors & Senior Management

Total customised objects and the areas they span, capabilities to replicate and critical controls — written for non-technical sign-off.

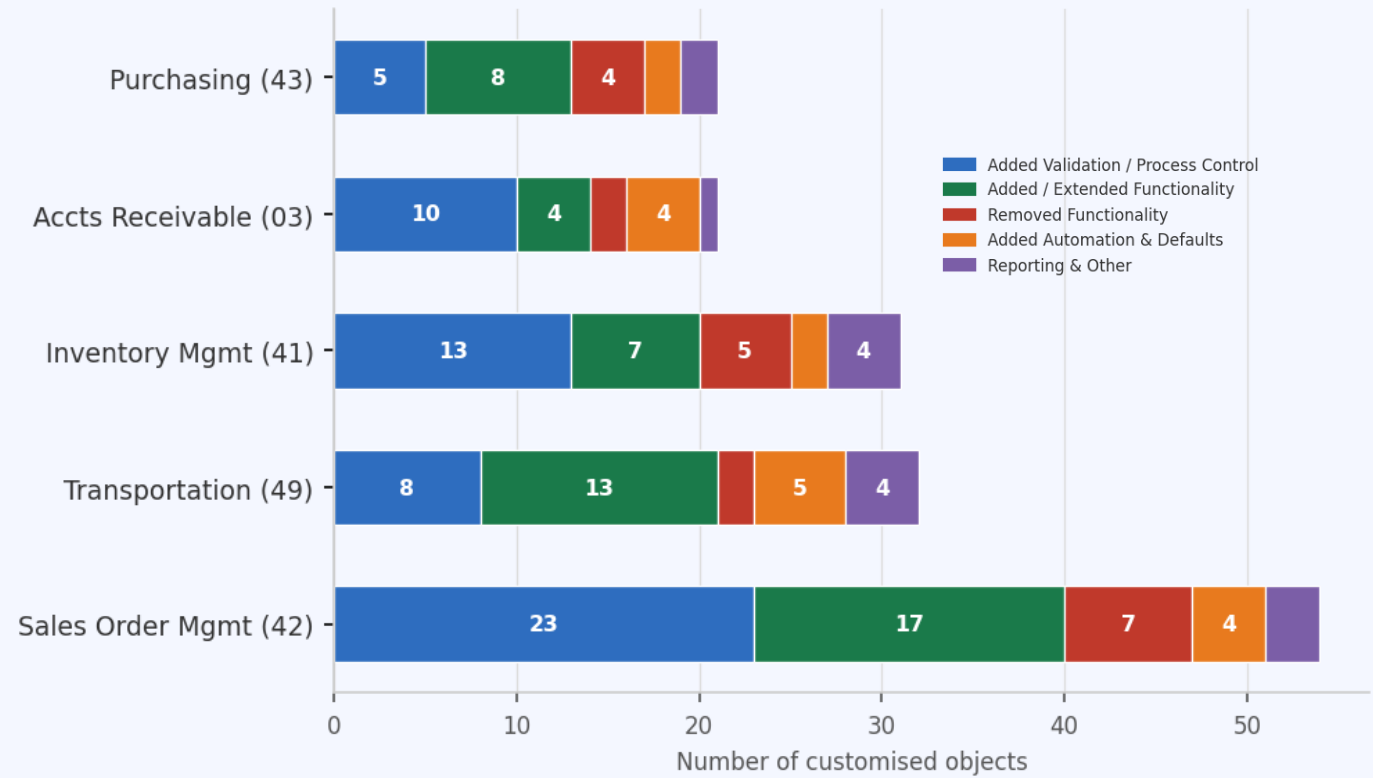


Modifications by Type

- Added Validation & Process Control — 92
- Added Automation & Default Logic — 26
- Added / Extended Functionality — 71
- Reporting & Data Capture — 17
- Removed Functionality — 28
- Modified Behaviour & UI — 13



Modification Types — Top 5 Systems



This is a technical analysis of the Event Rules (ER) for the JDE application **P55CF002 (Cash Flows Edit)**.

High-Level Summary

The purpose of this application is to manage and validate "Cash Flow" entries against specific Sales Orders. It calculates the total value of a sales order (including foreign currency and commissions), checks how much of that order has already been paid (via the Accounts Receivable table), and ensures that the user-entered grid records balance out to zero.

Detailed Functional Breakdown

1. Initialization & Data Gathering (Dialog is Initialized)

When the form opens, the system identifies the specific Sales Order line being edited.

- **Audit Info:** Captures the User ID, Date, Time, and Workstation for auditing purposes.
- **Order Totals:** It queries the **F4211 (Sales Order Detail)** table specifically for lines with a status code of "560". It sums up the **Extended Price** and **Foreign Extended Price** for all matching lines to establish the base value of the order.

2. Financial Calculations (Post Dialog is Initialized)

This is the most complex part of the logic, where the "Available Balance" is calculated:

- **Invoice Tracking:** It looks at the F4211 to find the associated Invoice number and Document Type.
- **Payment Verification:** It queries the **F03B11 (Customer Ledger)** to find the **Amount Foreign Open**. This tells the system how much of the invoice is still unpaid.
- **Commission Adjustment:** It queries **F42160 (Sales Commission)**. It calculates the commission percentage and **subtracts** it from the Extended Prices.
- **Balance Logic:** It calculates several key fields:
 - **Nett Open Amt:** The unpaid amount minus commission.
 - **55 Order Balance:** The total order value (Nett Invoice + Foreign Extended Price).
 - **55 Paid Balance:** How much has actually been paid.

3. Grid Management & Validation

The application uses a grid (linked to table **F55CF001**) where users enter cash flow records.

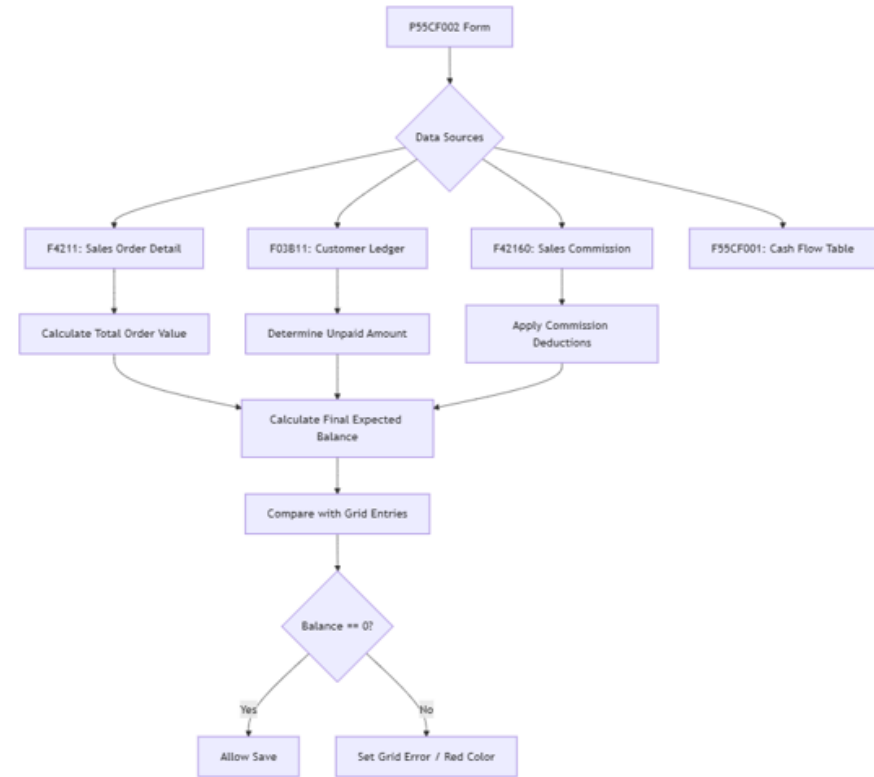
- **Running Total:** As records are fetched or changed, the system maintains a running total called **FC Grid Extended Price**.
- **The "Balance" Check:** In the **Last Grid Record Has Been Read** event, it calculates: **FC 55 Balance = [FC For Extended Price] - [FC Grid Extended Price]**
- **Visual Alert:** If the balance is less than zero, the balance field turns **Red**.

4. User Actions (Buttons & Edits)

- **OK Button:** Performs a final validation. If the **FC 55 Balance** is not exactly zero, it triggers a grid error (**55CFW**) on the Amount column, preventing the user from proceeding until the records balance.

- **Data Entry Validation:** In the **Row Exit** event, it ensures that the **Date** is not null and the **Amount** is not zero/blank.

Data Flow Diagram

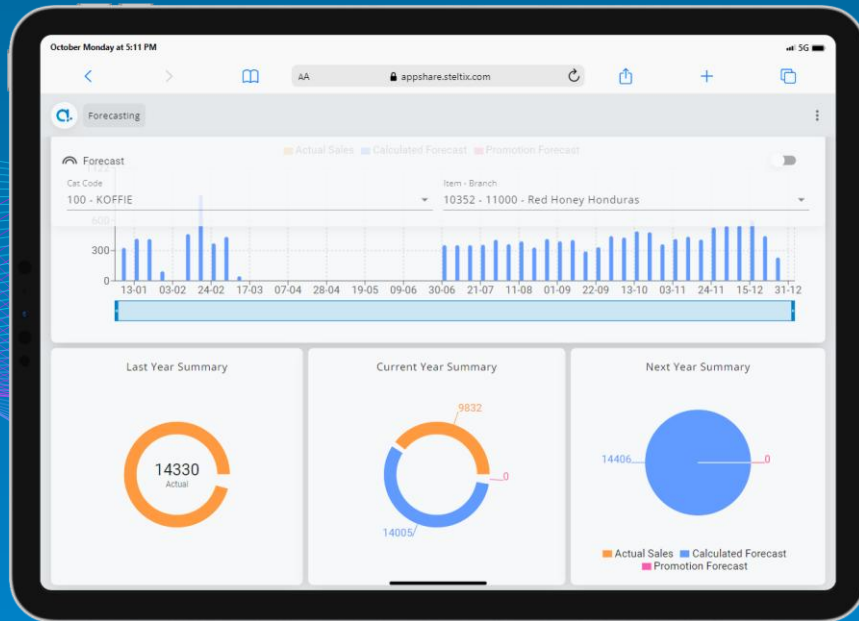


Key Technical Observations

1. **Customization:** This is a heavily customized application (indicated by the **55 prefix** in table names like **F55CF001** and program **P55CF002**).
2. **Commission Handling:** The logic is designed to ensure that commissions are not counted as part of the cash flow balance.
3. **Strict Balancing:** The application acts as a "balancing act"—the user must enter grid records that exactly offset the calculated order value.



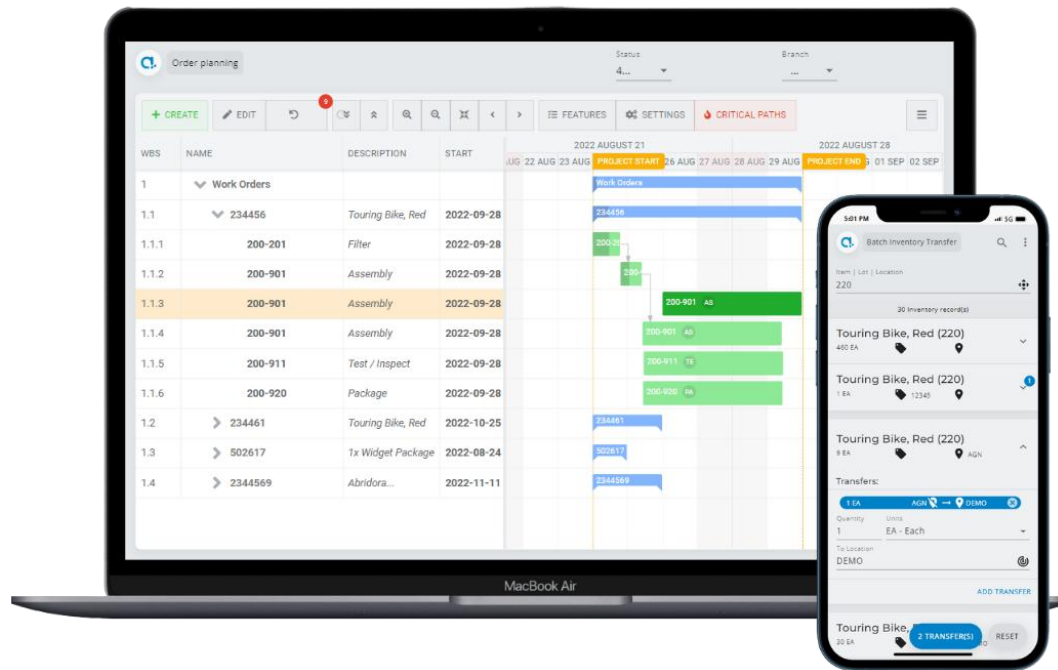
2. Generating Apps with Appshare



steltix
We connect

steltix

+1000 Apps Created For all processes in JD Edwards



Supply Chain Management

- Purchase Order Create and Approval
- Purchase Receipt
- Inventory Transactions
- License Plate Transactions
- Warehouse Automation (License Plate, Receive, Put-away, pick, ship, move, auto-locate)
- IOT Driverless Vehicles, Devices and Robots
- Cycle counting



Customer Relationship Management

- Mobile CRM
- Order Entry
- Order Inquiry
- Open Orders/Invoices/Complaints
- Contact Information
- Returns
- Case Management



Financial Management

- AP Automation
- E-invoicing (Peppol)
- Payee Control, Expense Entry
- PO Approval, Invoice Approval
- Mass data updates – costs, price, products



Manufacturing Management

- Serial Check, Work Order Team Registration
- Work Order Time Entry
- Work Order Material issue
- Work Order Completion
- Mass backflushing



Asset Lifecycle Management

- Serial number Checks
- Preventive Maintenance Work Order Service Work Order
- Report Failure or Damage



HCM

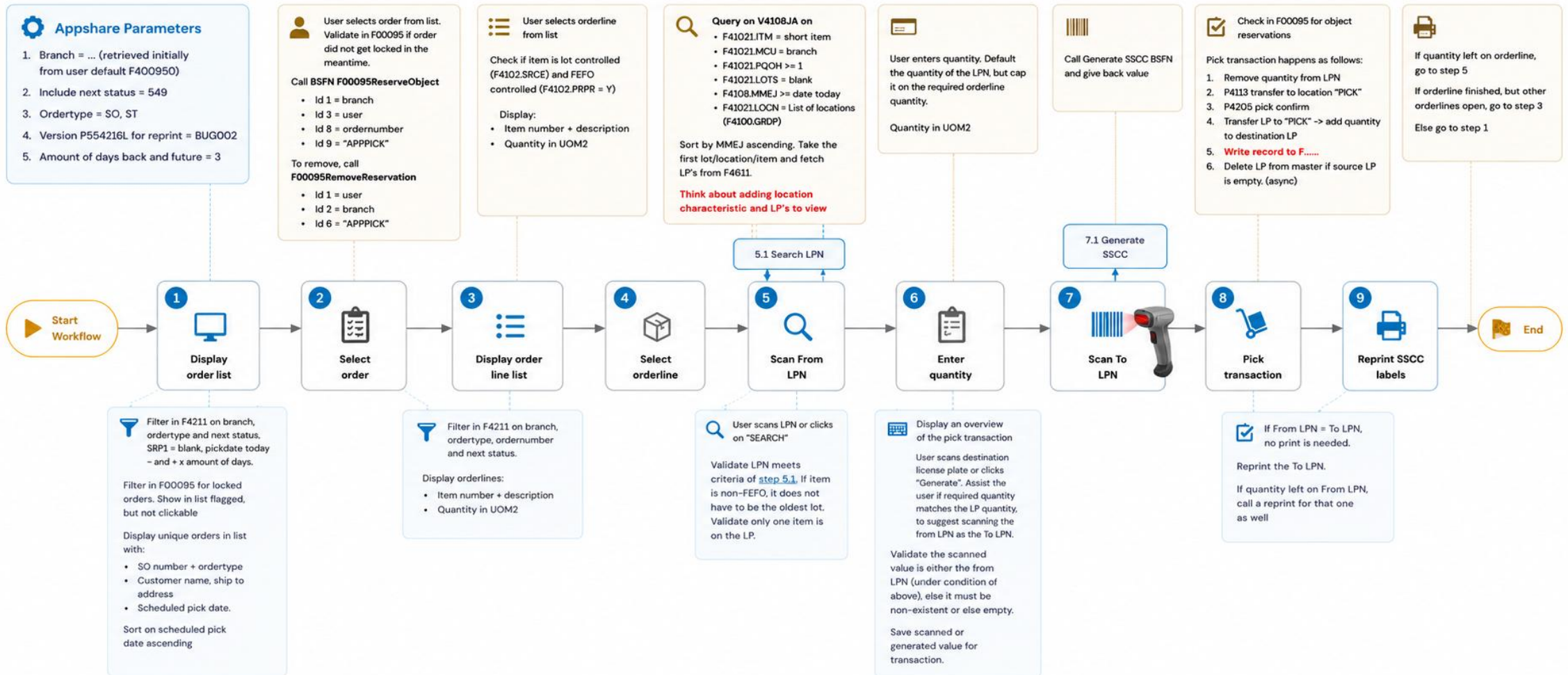
- Time Entry/Approval for pay types & Mobile Fleet
- Hour's timecard and dollar for per diem
- Leave Request and Approval
- Manager and Employee Mobile Self Service



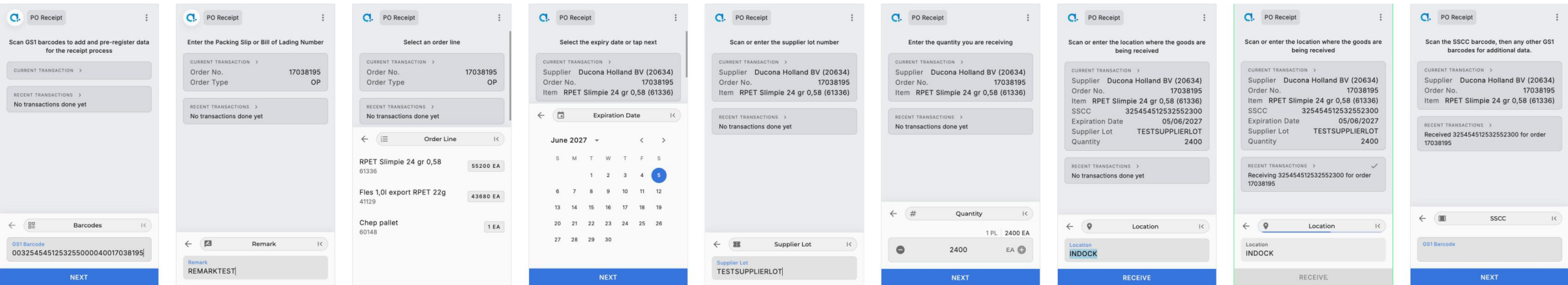
Field Services

- End-to-end field service management
- Service Work Orders, raise new work-orders
- Field and back-office
- Time capture
- Inventory Requestion
- Reporting failures/damage
- Mobile, scanning & desktop channels

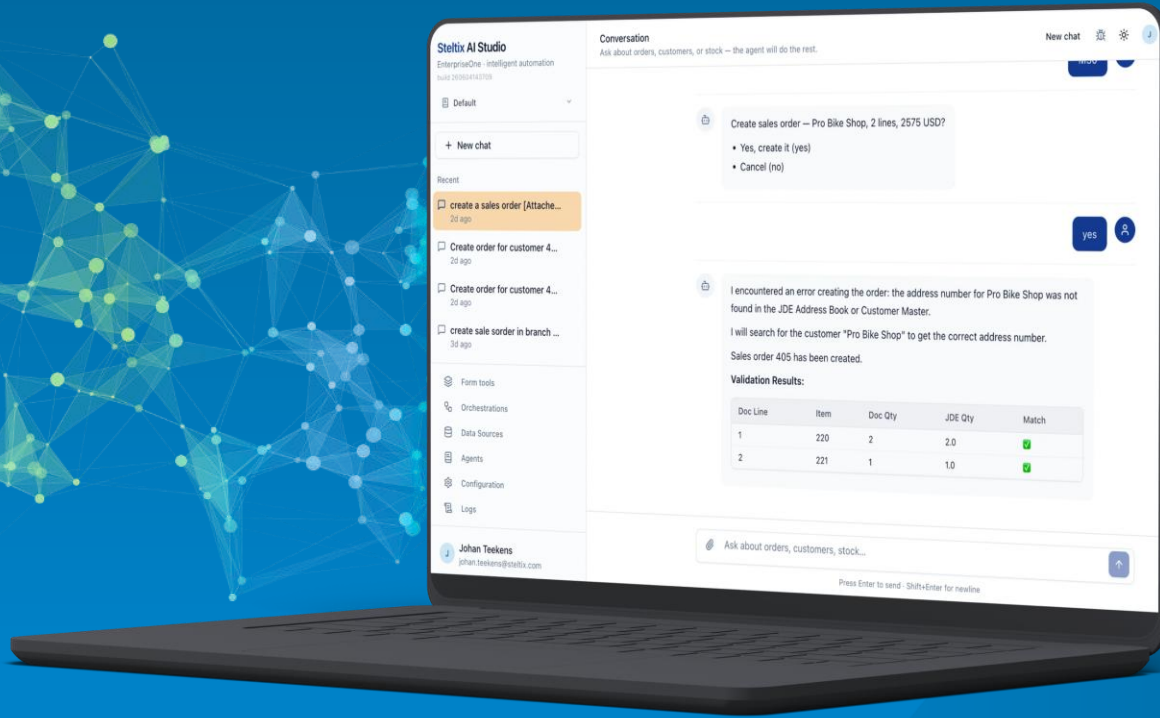
Creating Apps with AI



Creating Apps with AI



3. Steltix AI Studio



steltix
We connect

steltix

Steltix AI Studio

Transactions, chat and documents

Drop in any document — the agent reads it



Reads Any Document

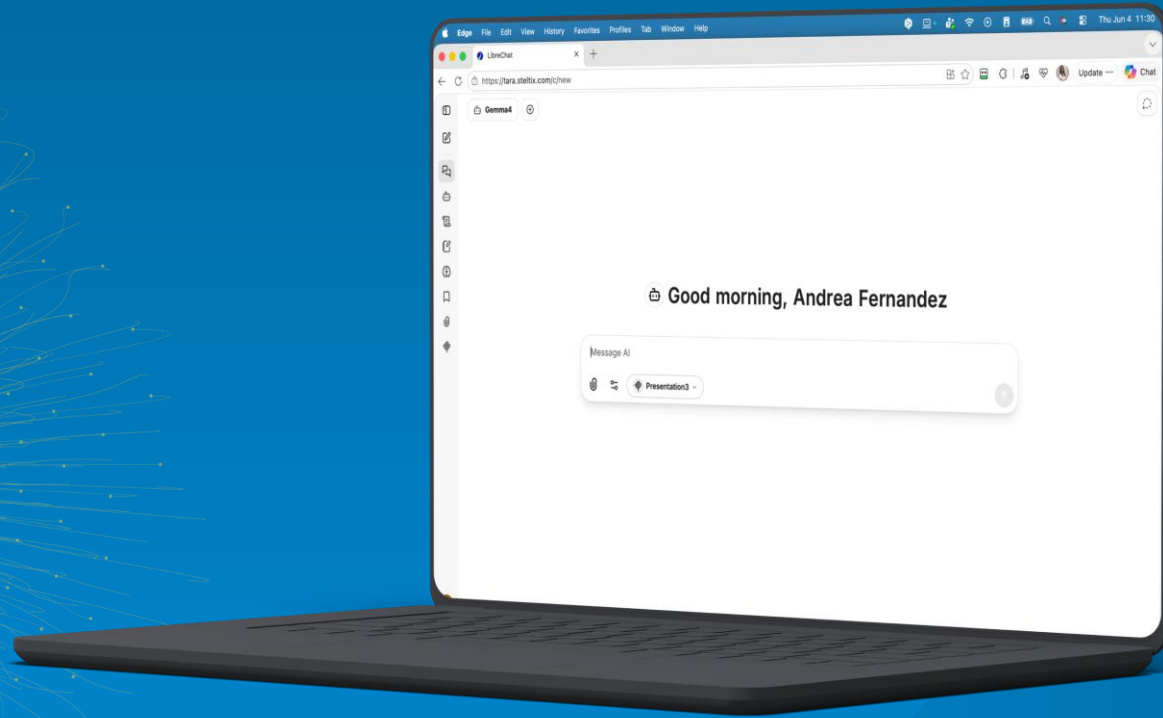
PDFs, images and scans — POs, invoices and quotes parsed into JDE-ready fields.



Understands the Content

More than OCR: the agent identifies vendor, buyer, line items and totals — and asks when something is unclear.

4. Steltix Tara



steltix
We connect

steltix

Steltix Tara

Ask. Analyze. Act.

AI-powered intelligence layer for JD Edwards that turns complex business data into instant answers using natural language.



Intelligent Data Retrieval

Natural Language Querying: Converts plain English questions into precise JDE data requests.



MCP (Model Context Protocol)

Open-source standard for connecting AI to external systems.



Enterprise-Ready Architecture

AIS-Powered

Powered by an open-source LLM, ensuring data privacy

5. The Future

steltix
We connect



steltix

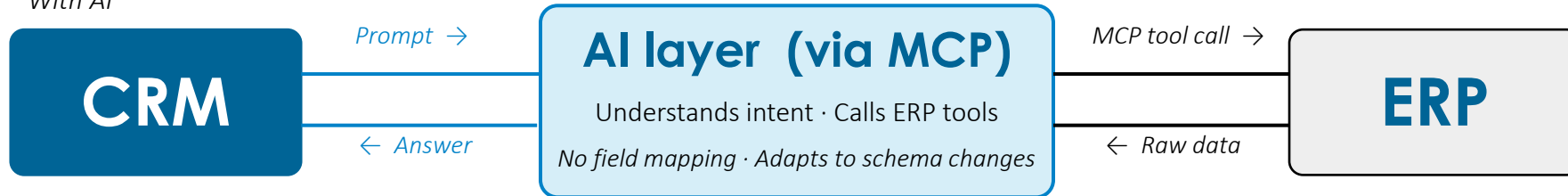
... All of that led to our newest recipe

traditional approach



✗ Schema changes break it ✗ Needs specialist devs ✗ New flow = new integration

With AI



✓ **No custom code**
Prompt replaces ETL logic

✓ **No field mapping**
AI infers intent & format

✓ **No maintenance**
Adapts to schema changes

The logo for Steltix features the word "steltix" in a bold, blue, sans-serif font. Below it, the tagline "We connect" is written in a smaller, black, sans-serif font. The background is white with a large, blue, curved graphic element on the right side that resembles a stylized arrow or a thick brushstroke pointing towards the right. A thin blue vertical line is positioned on the left side of the page.

steltix
We connect

Oracle & Steltix ANZ Roadshow 2026

Follow Up

Let's Continue the Conversation

For roadshow follow-up, product discussions,
or next steps, please contact:



Daniel Smith

Managing Director, Steltix APAC



Email: daniel.smith@steltix.com



Phone: +61 417 086 290



Website: www.steltix.com



AI & Automation for JD Edwards

steltix | **ORACLE**

