

ORACLE & STELTIX ANZ ROADSHOW 2026

Roadshow Presentation Series

Presented across three locations in June 2026



Melbourne

 Monday 15 June 2026



Auckland

 Wednesday 17 June 2026



Sydney

 Friday 19 June 2026

Thank you for attending

steltix

ORACLE

Oracle & Steltix ANZ Roadshow 2026

Welcome and Opening the Roadshow

Presentation Introduction

Daniel Smith

Managing Director, Steltix APAC

steltix | ORACLE



ANZ Roadshow – You are in Great Company



FRONERI



FISHER & PAYKEL



TREASURY WINE ESTATES

ravensdown



BRICKWORKS
— BUILDING PRODUCTS —



Bis
INDUSTRIES

Downer
Relationships creating success



News Corp

VIVA
Energy Australia



Wesfarmers Chemicals,
Energy & Fertilisers

Dyson
GROUP OF COMPANIES

dnata



Northpower

Staughton Group



MACKELLAR
1985

civeo

SCENTRE GROUP

Rocla

AV
AUSTRALIAN VINTAGE LTD



Coopers

Rinnai

GPC Gladstone Ports Corporation
Growth, prosperity, community.

DURATEC

V/Line

Baxter

Ingenia

ARB
4X4 ACCESSORIES

SKELLERUP

CALDIC

VICINITY

TECO
Together, we empower the future™

Mérieux
NutriSciences



indara
DIGITAL INFRASTRUCTURE



eureka
GROUP
THE ADDING STAFF

NEUMANN CONTRACTORS

JNL
JUNIOR NEW & CALAND

Sponsored by

steltix

ORACLE

Thomson Reuters™

Oracle & Steltix ANZ Roadshow 2026

Reimagining JD Edwards at Enterprise Scale: Fulton Hogan's Future Systems Journey

Presentation Introduction



Bhavik Morar

Programme Director,
Future Systems Programme, Fulton Hogan



Co-presenter: **Daniel Smith**
Managing Director, Steltix APAC

steltix

ORACLE



Future Systems Programme



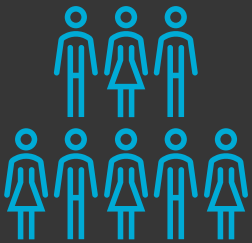
Reimagining JD Edwards at Enterprise Scale: Fulton Hogan's Future Systems Journey
June 2026

Bhavik Morar

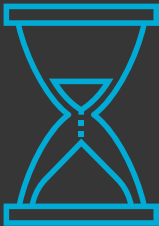
Programme Director
Future Systems



Fulton Hogan is a family owned business, committed to ensuring the work we do today will make a real difference to the lives of our people and customers, the communities they call home, and the world we live in, tomorrow.



10,000 + Employees



Operating since 1933



100+ Locations Across Australasia



Our vision & purpose

Creating, connecting and caring for communities



Our sectors

 Airports

 Bridges

 Civil

 Communicatio
ns

 Energy

 Land

 Ports

 Resources

 Roads

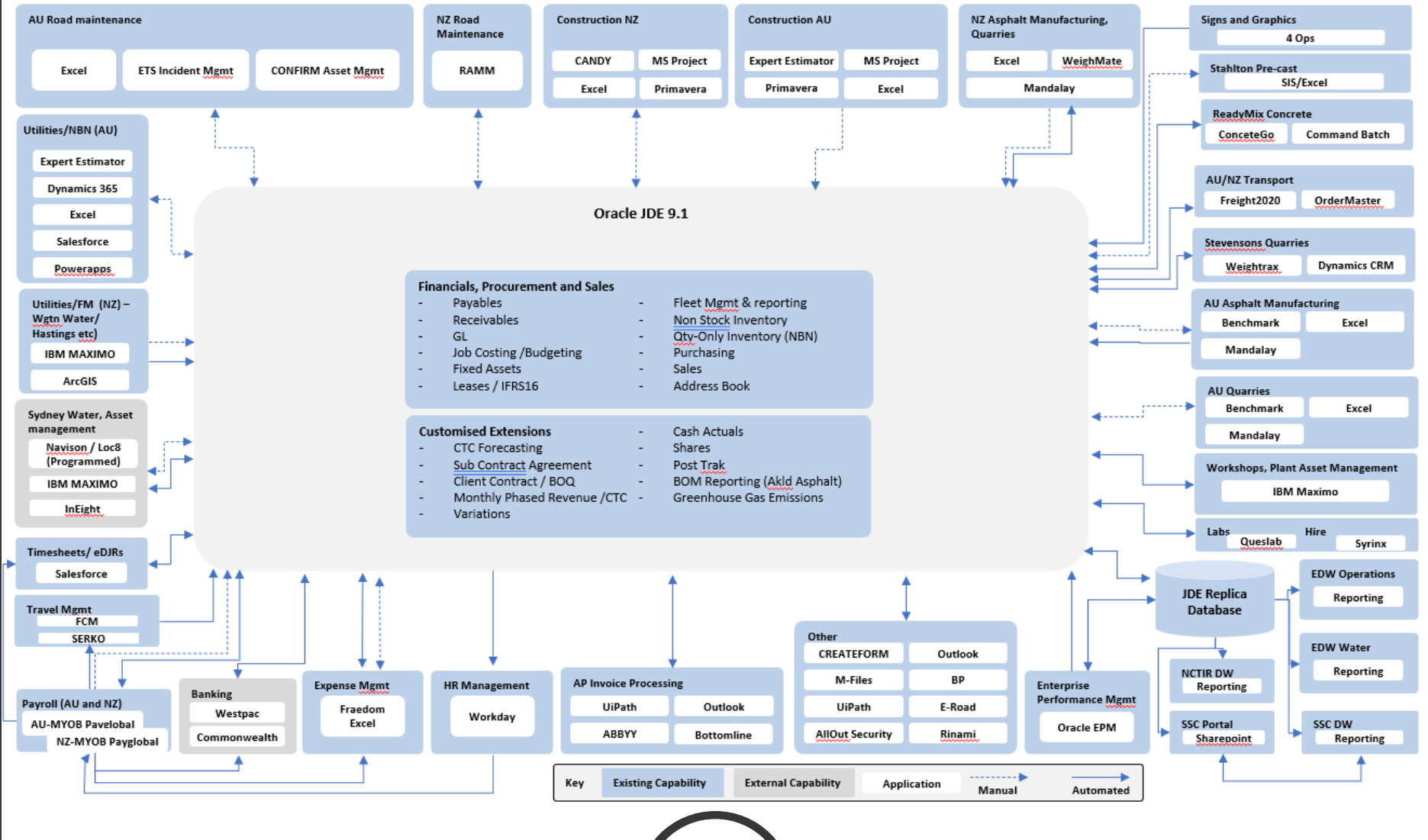
 Water



Our JDE
Modernisation
Journey



Current State Application Architecture



9.1

**Modernisation
wasn't optional –
it was a business
enabler**



Future Systems Story

Provide a 'fit for the future' business systems environment that enables our people to deliver successfully on a day-to-day basis.

- + "Greenfields"
- + Re-implement JDE 9.1 with JDE 9.2
- + Chart of Accounts re-design
- + Consolidated Address Book
- + Advanced Cost Accounting
- + Mobility Solutions (Purchasing, Storeroom, PAM)
- + Leverage all JDE functionality
- + Reducing modifications (270 → 150)
- + Simplified and consolidated platforms to reduce complexity
- + Standardised business processes
- + New reporting tool
- + Use modern technology and automation



Automation & Technology



Orchestrations 100 +



JET Interface (Landing Pages) 25 x



Oracle Guided Learning (OGL) 457 x



Forms Personalisation, E1 Pages, Watchlists, Cafe One



BI Publisher (replacement from Create! Form)



All-Out Security



Steltix SSO / MFA and Version Workbench

Steltix Automation Solutions CI/CD (Package Automation)

Steltix Dashboard for real time system diagnostics and health





FUTURE SOLUTION

JDE 9.2 and Connected Applications

AU Utilities

- IBM Maximo (Syd. Water)
- Navision / Loc8
- Dynamics 365 - Utilities

NZ Water

- IBM Maximo
- Arc GIS

Salesforce

- timesheets
- eDJR
- Plant PreStart
- CAMS
- MPM
- All other applications

Forms

- K2
- Salesforce

Expense Management

- Flexipurchase

Budgeting & Forecasting

- Planful

AU & NZ Road Maintenance

- ETS Incident Management
- CONFIRM Asset Management
- RAMM

Integrations

- Dell Boomi
- Cantara

AU & NZ Construction

- Rib CCS
- Primavera
- MS Project
- Expert Estimator
- Benchmark

Infrastructure Services AU & NZ

- Weightrax

AU & NZ Transport

- M2X

Civil Precast

- Salesforce

Rinami Storeroom Mobility

- Inventory Receipt/ Issue/ Transfer Barcoding

Rinami CAM Mobility

- Inventory Receipt/ Issue/ Transfer Barcoding
- Work Order Management (PAM)

JDE 9.2 Fully leveraged capabilities

New **Existing**

- Financials**
 - Payables
 - General Ledger
 - Fixed Assets
 - Receivables
 - Cash Management
 - Leases / IFRS16
 - Address Book
- Tools and Technology**
 - ReportsNow
 - CaféOne
 - E1 Pages
 - Watchlists
 - Orchestrator
 - Forms Personalisation
 - Forms Extensions
 - Single Sign-on (Steltix)
 - Jet Interface (Landing Pages)
 - BI Publisher
- Manufacturing / Inventory**
 - Item Master Mgmt. (eForm)
 - Stock On Hand & Counting
 - Inventory Valuation (WAC & Std Cost)
 - Bill of Materials
 - Manufacturing Work Orders
 - Cost of Goods Sold
 - Mobility for Storerooms
- Capital Asset Management**
 - Plant Asset Maintenance
 - Maintenance Schedules
 - Work Order Management
 - Condition Based Monitoring
 - Meter Readings
 - Service Logic for PAM
 - MEPs for Scheduling
 - Mobility for Workshops
- All Out Security**
- Sales**
 - Sales Orders
 - Base & Advanced Pricing
 - Invoicing
- Customisations**
 - Variations
 - Client Contracts / BOQ
 - CTC Forecasting
 - Monthly Phased Revenue/ Cost Forecasting
 - Sub Contract Mgmt.
 - Shares
- Oracle Guided Learning (OGL)**
- Job Costing**
 - Projects WBS (Activity Codes)
 - Job Status Inquiry & JSR Reporting
- Procurement**
 - Purchasing – Non Stock
 - Up-front Approvals
 - Mobility for Raise, Approvals
- Financials**
 - Advanced Cost Accounting
- Sales**
 - Quotes
 - Agreements
 - Internal Product Charge ST/OT
 - RMA for Credits Process
- Procurement**
 - Purchasing For Stock
 - Environmental
 - Rinami Mobile for Receipting
- Job Costing**
 - Service Work Orders (minor jobs)
 - Inventory Mgmt.
 - Timecard Costing (Labour/Plant)

Labs & Equipment Hire

- Qestlab
- Syrinx (Hire only)
- Quadrell

Shared Service Central Portal

- SharePoint

Signs & Graphics

- 40ps
- Magento

Document Management

- M-Files
- Sharepoint
- JDE Attachments
- G Drive

Payroll AU & NZ

- PayGlobal AU
- PayGlobal NZ

HR Management

- WorkDay
- Learning Mgmt. System

Finance & Banking

- Westpac Bank
- Commonwealth Bank
- Balance Sheet Rec Tool
- Exchange Rates
- Credisense

Rinami PO Mobility

- PO Raise
- PO Approvals
- PO Receipts

AP Invoice Processing

- UIPath
- ABBYY
- Transform AP
- MS Outlook

Other

- BI Publisher
- UIPath
- BP Fuelcard
- E-Road

Reporting Tools/ Enterprise Data Platform

- ReportsNow
- PowerBI
- FinSight

New Features/Applications Existing Features/Applications



Future Systems Stats

Stats	Canterbury	NZ - South Island	NZ - North Island	AU FHIS	AU FHC/FHU
Training – Business Users	739	1,713	2,847	1,545	1,337
Training – Toolbox Users	299	643	1,582	752	625
Training – Weeks (+ Mop Up)	4 (+1)	4 (+1)	6 (+1)	7 (+2)	6 (+2)
JDE Users	676	893	1,945	927	800
Go Live Support – Datacom	2	4	2	2	2
Go Live Support – FSP	25	58	58	46	37
Cherwell Tickets	3,453 (Apr25-Oct25)	3,383 (Nov25-Feb26)	3,769 (Mar26 –June26)	TBC	TBC
Weighbridges	13	14	14	49	-

Relationships matter

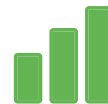


Oracle Guided Learning (OGL) Experience



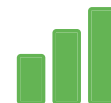
Why We Chose Oracle Guided Learning (OGL)

- Need to embed, in-application guidance
- Desire to reduce training overhead and onboarding time
- Ability to standardise processes across teams
- Real-time updates aligned with JDE changes
- Multi-factor authentication (MFA)
- Enterprise DAP

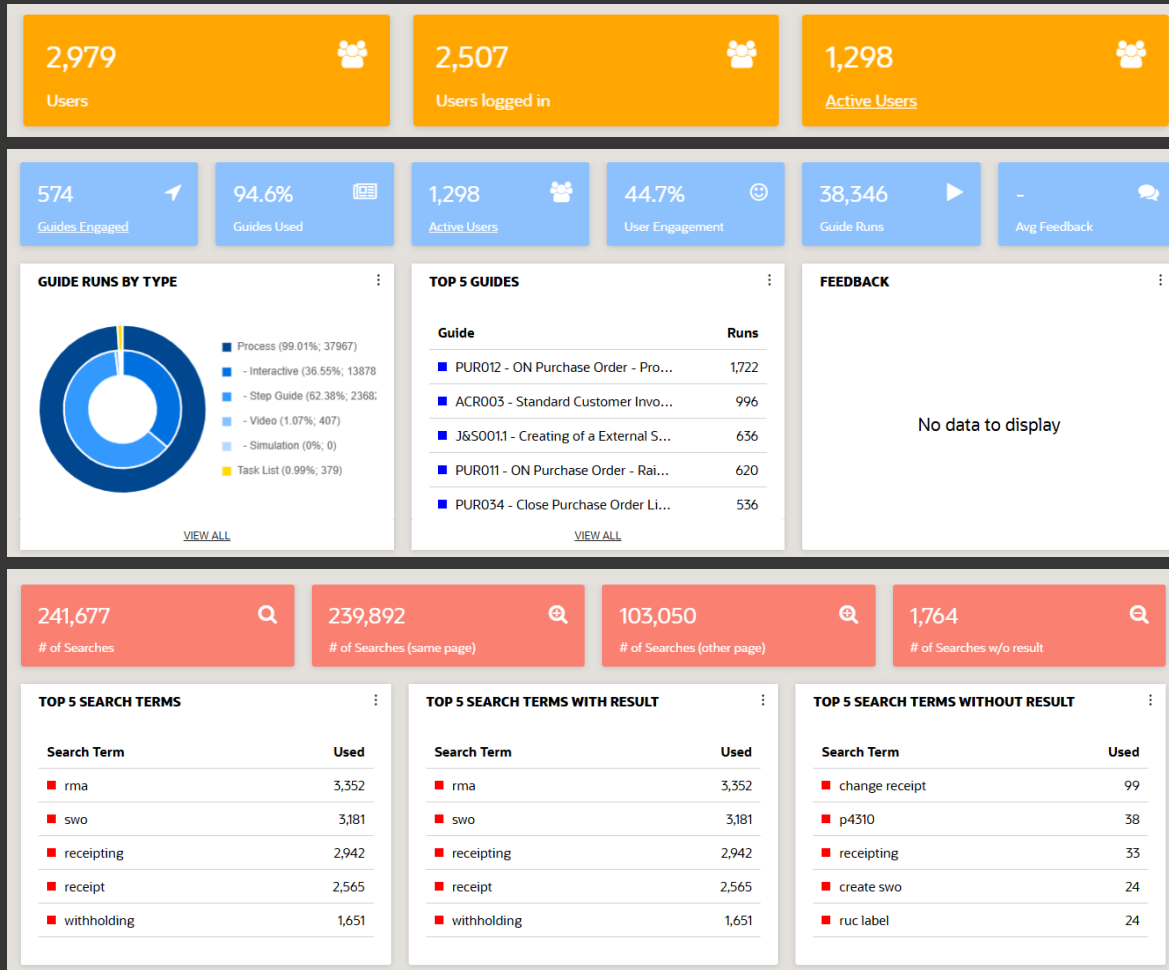


Our Adoption Approach

- Significant increase in active JDE Users (+193%)
- Started with high-impact processes (e.g., finance, inventory)
- Co-designed with SMEs
- Embedded guidance into daily workflows
- Self-help (teach how to fish)



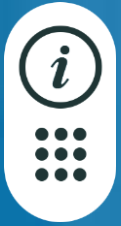
Outcomes / OGL Analytics



KEY CALLOUTS

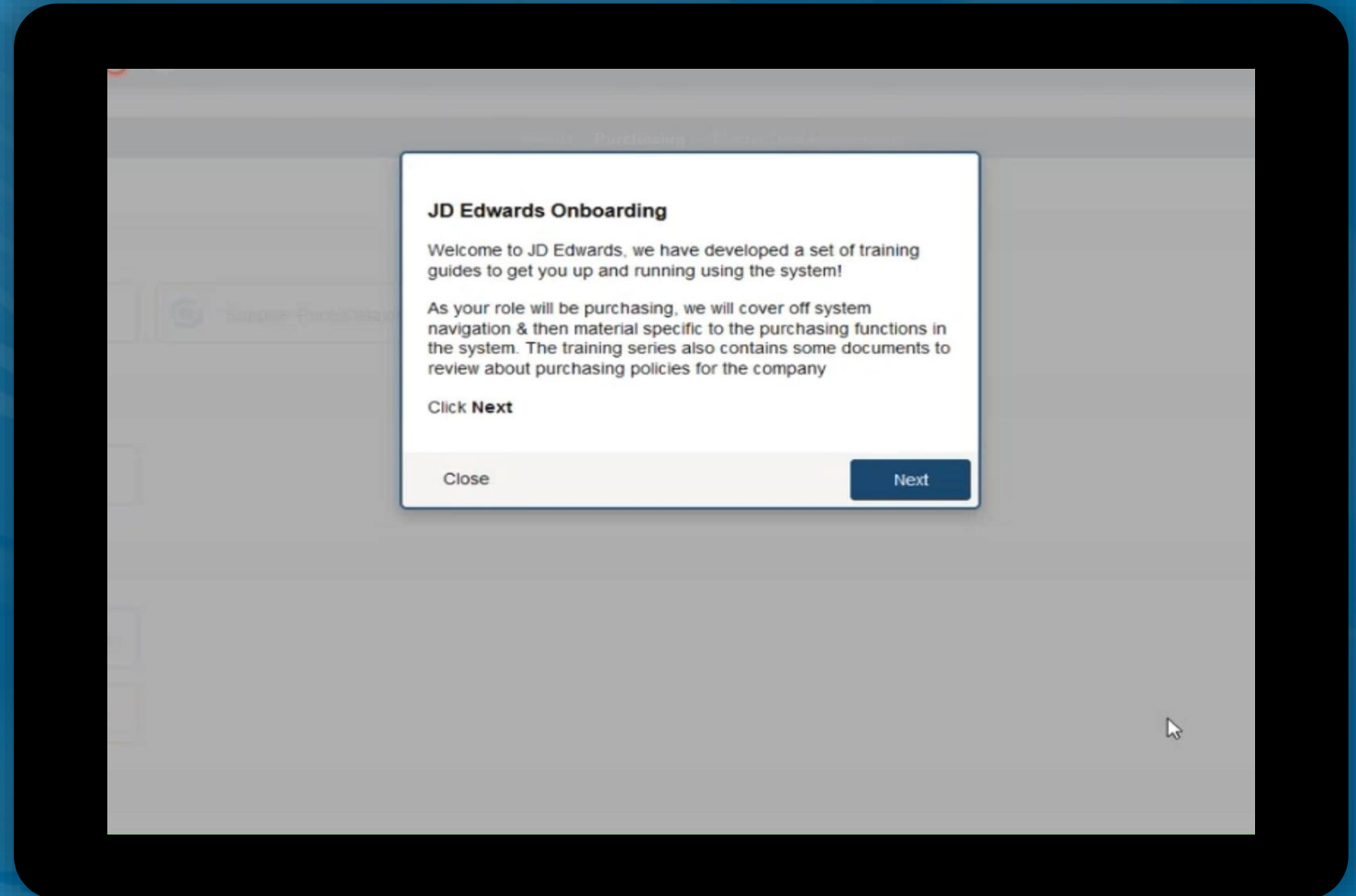
- 2,979 Users
- 241,677 searches
- 38,346 Guide Runs
- 574 Guides Engaged
- 94.6% of Guides Used





OG4JDE - Onboarding New Users/Employees

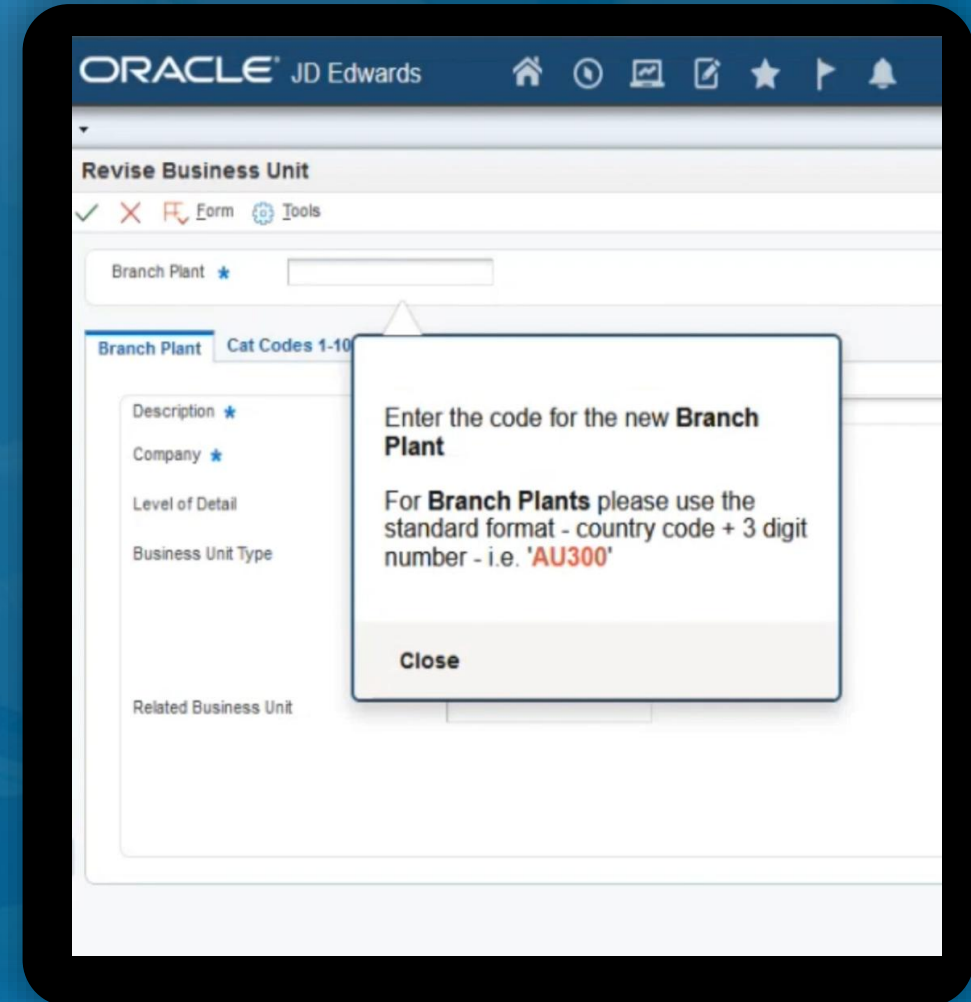
- Role-based, Onboarding
- In-flow, “GPS-style” guidance at the keyboard (contextual)
- Progress insights for Change & Training teams
- System, Business Process and Company Policies
- 78% faster user adoption (time-to-proficiency)
- 63% fewer helpline calls during ramp





OGL4JDE - Master Data Management

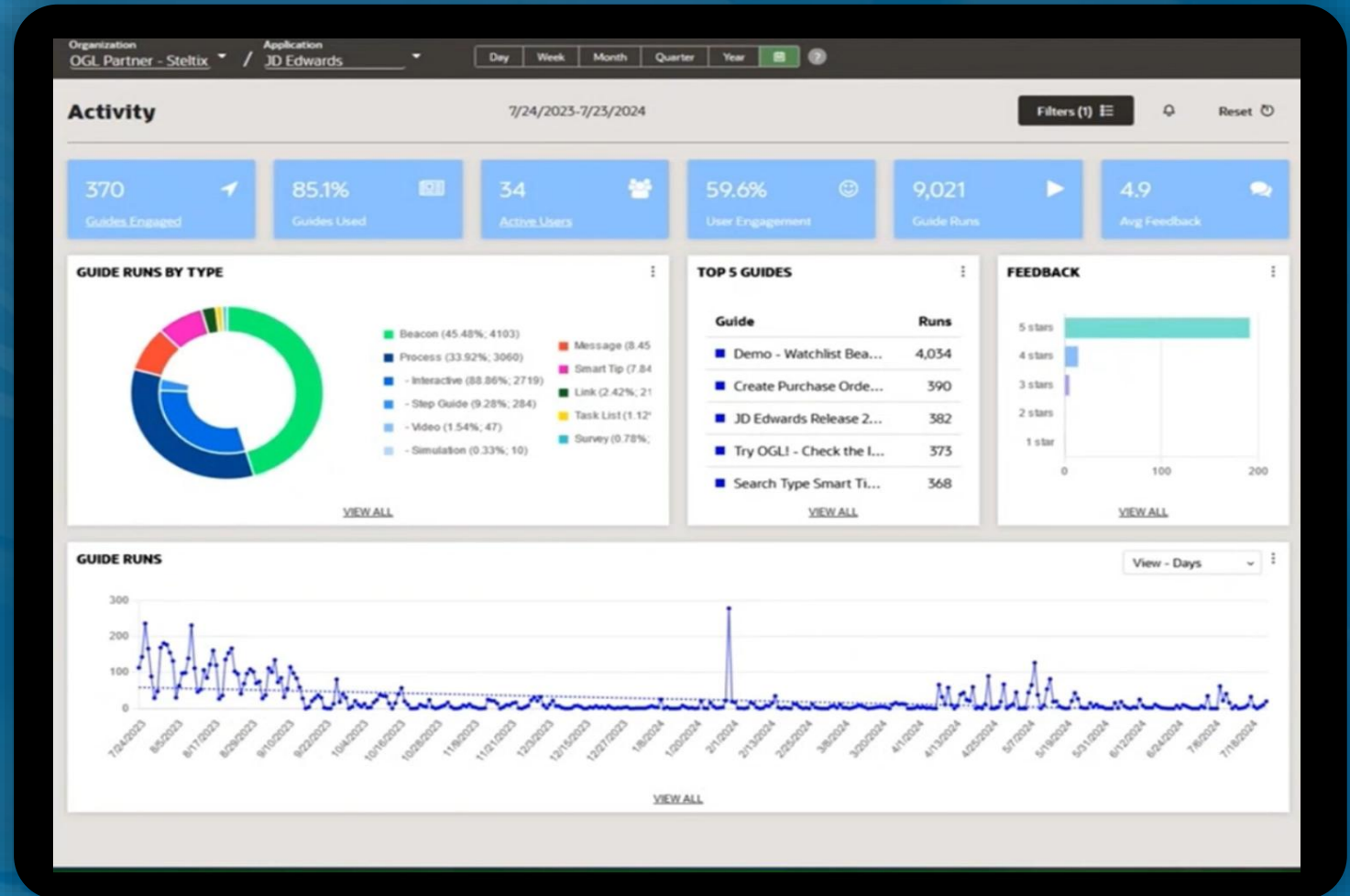
- Implement your Master Data Strategy at the keyboard.
- Prevent out-of-format entries; improve data quality.
- 78% faster user adoption with guided steps and inline validation¹.
- Create, update, and archive navigation guides to support the business process.

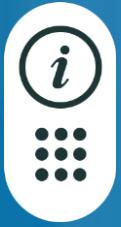




OGL4JDE Live Analytics for Change & Training

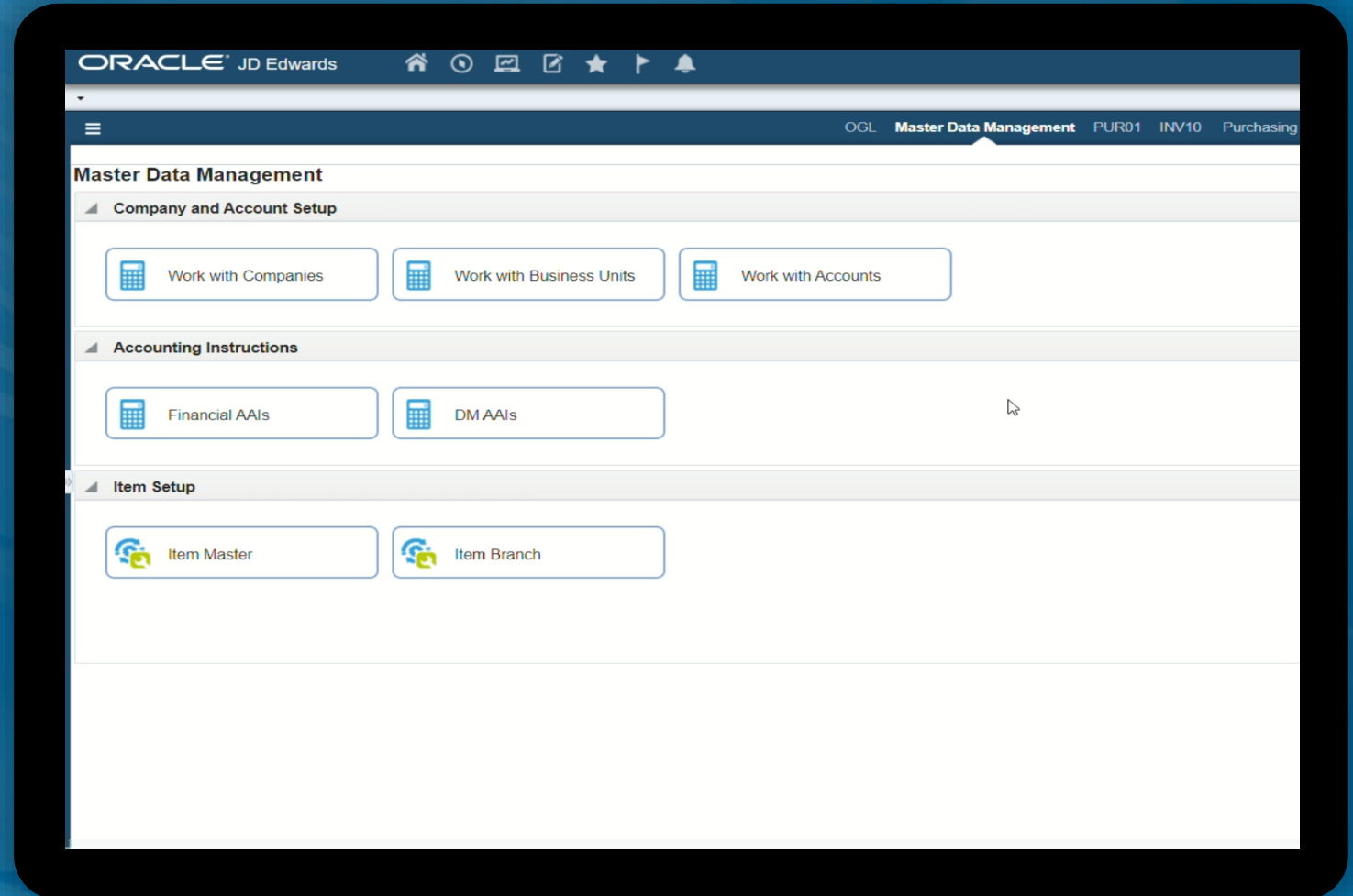
- Adoption & utilisation by role/cohort (who's using which guide, how often)
- Time-to-proficiency tracking (ramp curve per team/region)
- First-time-right & validation-fail hotspots (fields/steps causing the most rework)
- Trend alerts (spikes in help requests, policy exceptions, or drop-offs)
- Guide health & lifecycle (owner, last updated, "stale" flags, deprecation)
- Role Based Dashboards





OGL4JDE – Navigating Orchestrations

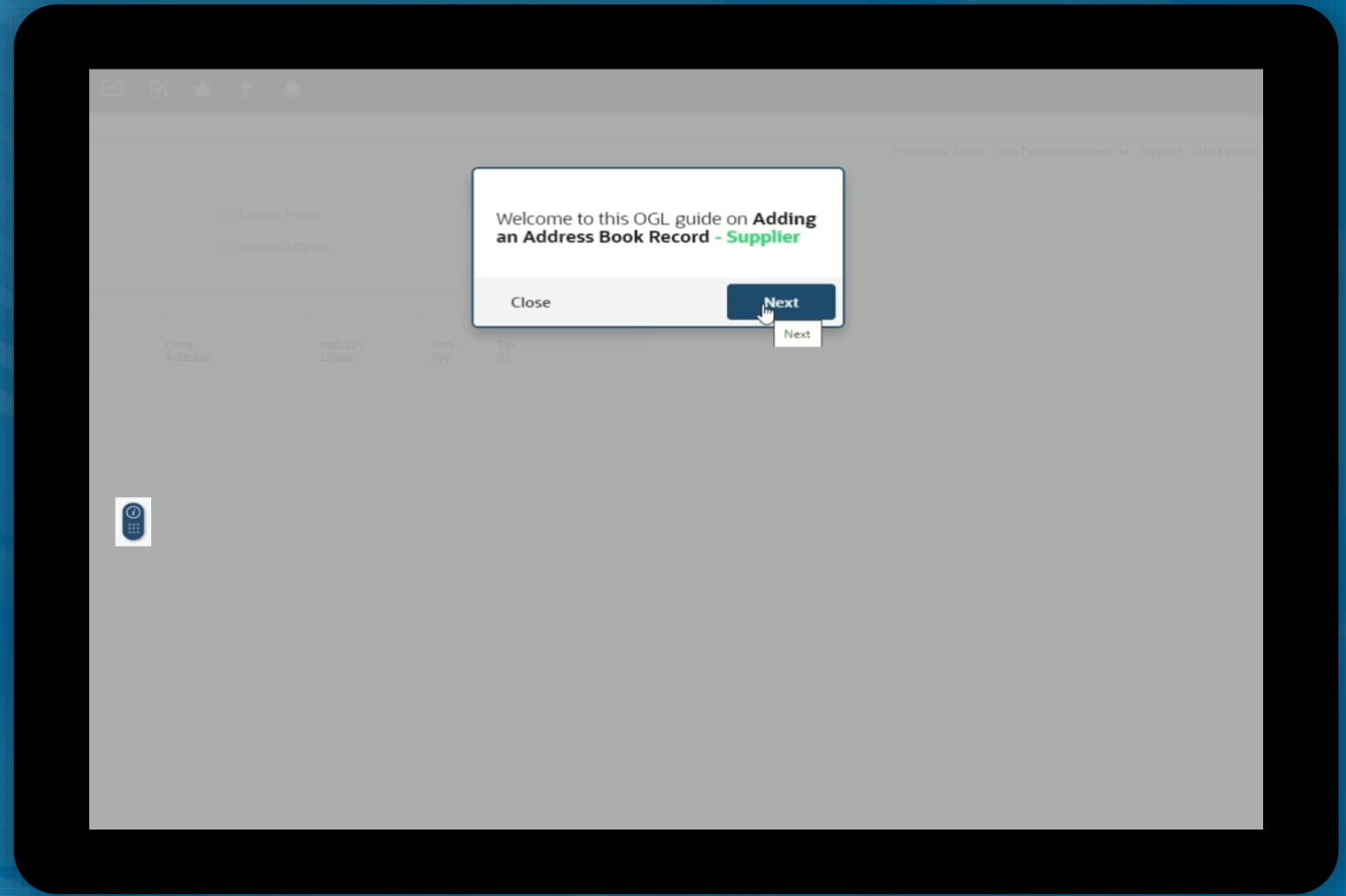
- Create Navigation Guides to support new orchestrations, UDOs, Forms, Policy changes etc
- Role-based, step-by-step guides
- System, Business Process and Company Policies
- 78% faster user adoption (time-to-proficiency)
- 63% fewer helpline calls during ramp
- In-flow, “GPS-style” guidance at the keyboard (in context)
- Natively integrated with JD Edwards; extends to non-Oracle apps
- Continuous innovation matched by continuous training





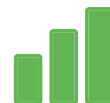
UGL4JDE User Experience – UDO Forms

- Role-based, step-by-step navigation in the flow of work
- System, Business Process and Company Policies
- 78% faster user adoption (time-to-proficiency)
- 63% fewer helpline calls during ramp
- In-flow, “GPS-style” guidance at the keyboard (in context)
- Natively integrated with JD Edwards; extends to non-Oracle apps
- Continuous innovation matched by continuous training



Benefits & Lessons Learned

- Great confidence in adopting JDE 9.2
- Improved data quality
- Faster onboarding and reduced training time
- Fewer support tickets and process errors
- Standardised execution across sites / regions
- Dashboard monitoring
- Specific guides are too long – shorten
- Utilise Smart tips
- Tailor guides that aren't being used





ONE TEAM...

Future Systems●●○

Helping to build
a better business,
together.

Oracle & Steltix ANZ Roadshow 2026

Follow Up

Let's Continue the Conversation

For roadshow follow-up, product discussions,
or next steps, please contact:



Daniel Smith

Managing Director, Steltix APAC



Email: daniel.smith@steltix.com



Phone: +61 417 086 290



Website: www.steltix.com



AI & Automation for JD Edwards

steltix | **ORACLE**

