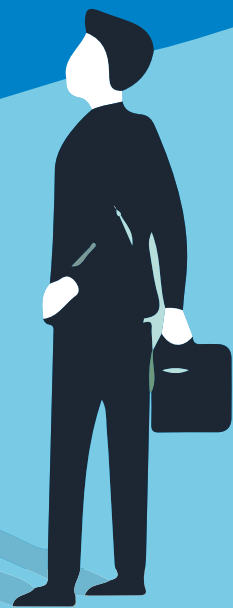


4

SECRETS OF THE SUPER SUCCESSFUL JD EDWARDS USER



You Are The Key Player In Your Organization?

**“Super Successful
JD Edwards Users
are crucial resources
within their
organization**

You know how the system works and you can share that knowledge with other users.

You are the internal JDE expert. As you become even more familiar with the features that JD Edwards has to offer, you'll see how to leverage new technology.

We highlighted the four most important secrets for you, knowing that there are much more secrets to discover.

Discover some of the best kept JD Edwards secrets



*Jeroen Renes
Steltix, Customer Manager*

Dear JD Edwards User,

Congratulations with downloading this exclusive study!

You are one step closer to becoming an (even more) successful JD Edwards Super User.

This study reveals 4 strategies that will help supercharge your work.

Learn how to combine information from multiple sources in one JD Edwards screen.

Stop searching for information. Let JDE notify you when your attention is required.

And there's more...

Super Successful JD Edwards Users stop bastardizing their JDE system. They use what is there. They squeeze out every single bit of technology and functionality that it has to offer.

No more custom coding! No additional third party software just to support user specific requirements. Discover how you can literally offer any JD Edwards transaction to the end user in exactly the way they want.

No-code, low-code platform?

Already in there.

This study isn't just reading material.

For every secret that we're about to reveal to you, we have also included practical exercises.

You can put our proven strategies to work NOW!

 **Let's get started...**

01

Use Multiple Sources Within a Single JD Edwards Screen

Do you find yourself using the 'alt-tab' combination all day long? Trying to find and combine information to help answer that one question that you have?

A different system or another screen to just get answers that you need NOW!

Although JD Edwards could be (and should be!) your 'single source of The Truth', in practise often important information is also stored in other applications.

With E1 Café One, you can combine your JD Edwards information with just about any form or any url-driven type of content.

Engineering documentation in combination with your JDE work orders, supplier portal information next to your purchasing transactions or real time weather and traffic information to support your transport planning.

But that's not all...

Super Successful JD Edwards Users create reporting templates with Microsoft Word, Microsoft Excel or Adobe Acrobat that enables application data to be reused and reformatted into various layouts and output types.

Combine content from multiple sources, view additional information in transactions and personalize information shown.

Curious to learn how you can stop the ever-lasting search for the right information TODAY?

Check out our Master Class exercises!

 **Try our Exercise now**





TRY IT YOURSELF

1

Go to: `demo.steltix.com`

Sign on with User and Password DEMO and navigate by fast path "ab" to address book

2

Open "Edit Form Layout"

Click on the + symbol and drag and drop the "EnterpriseOne Form" to your place.



Add the following EnterpriseOne Program/Form:
P01012 - W01012A

Address Number should be mapped:
Create a dynamic link and select "is mapped to" for Address Number and click on the plus beside the address number in your grid.
Save the Link - Save the Layout -
Close editing the page.

3

Search for all address book records

Select one to view the related information.



That's it!

You want to get more samples?

FOR SUPER SUCCESSFUL USERS

02

Use Traffic Lights For Your Daily Work and stay connected to Your Business

We are 100% sure that you're already using notifications on your mobile phone alerting you about new emails, WhatsApp messages, friends requests on social media or new series being added to Netflix!

Are you using the same functionality in JD Edwards?

Or are you still searching for information, mouse-clicking your way through applications, grids and forms?

Super Successful JDE Users refuse to click more than one time to get to the screen that they need!

Let JD Edwards do the donkey-work for you and help you focus on stuff that really matters. Information that requires your valuable attention and to take action.

Are there any orders late for delivery? Any Planning message that need to be processed immediately? Pending approvals? Watchlists represent collections of items that match user-defined criteria. They are query based and easy to create.

Your JDE system is not just a place to record and report transactions.



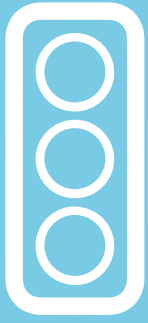
It's the epicentre between you -The Super Successful JDE User- your organisation, and your entire work-ecosystem. Keeping everyone connected and responsive to changing business requests and information.

Alerting you is only part of this secret... JD Edwards Notifications enable Super Successful JD Edwards Users to stay connected to their business. They receive important information immediately. Without a mouse click.

Application links in notifications enable them to stay proactive and responsive to critical business events, whether they are busy at their desk or out in the field.


JD Edwards Watchlists and Notifications are true game changers. Never miss a crucial piece of information or be left in the dark about stuff happening around you.

 **Let's get pro-active!**



1


Go to: `demo.steltix.com`

Sign on with User and Password DEMO and navigate to P4210. Create a query  for Promised Delivery = **"Today minus 1 day"** and NEXT Status = 560. Save it.

2

Create a watchlist based on this query



by clicking on the  symbol.

Add a warning and a critical threshold and select the query you just created as the one which should be used.

SAVE IT

3

Select the watchlist flag



on top of the screen, search for your watchlist and you will get straight to the Sales Orders due for delivery.

That's it!

You need more details or want to learn how to setup a notification?

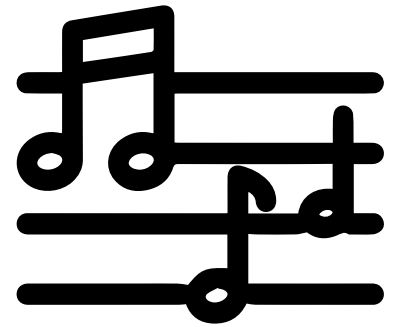
FOR SUPER SUCCESSFUL USERS

03

Collect, Filter, Analyse and Act on Real-Time Information

Super Successful JD Edwards Users feed data to orchestrations and their JD Edwards system stays up-to-date and accurate without human intervention.

The Orchestrator enables them to create, test, and deploy orchestrations. They capture the key processes just by recording the steps while using the EnterpriseOne application. They let JD Edwards do the most boring tasks and take care of important tasks.



A bit like composing!

Orchestrate and Automate by Simply Dragging & Dropping

No-code and low code platforms. Automation and digitalisation of business processes.

One of these buzz words (or all of them!) are probably in the top 3 of any CIO list for 2021. Why? What are their business drivers?

Often this boils down to 'automating repetitive tasks', 'adding business specific functionality' or simply 'reducing paperwork, the use of Excel or any other ERP-like tool'.

The inevitable result? Additional investments in third party solutions and knowledge.

Complicating your application landscape and increasing your organizations dependence on external consultancy firms.

Don't fall into that same trap!

Super Successful JD Edwards Users know better than that.

JD Edwards comes with a build-in low-code platform. Enabling you to fire of a immense number of JD Edwards transactions by the push of one single button.

The secret? The JD Edwards Orchestrator.

Simply use drag and drop functionality to create your own automations with and for JD Edwards!

Learn how to create your (first) orchestration for an easy Address Book Entry.



TRY IT YOURSELF

1

Go to: demo.steltix.com

Sign on with User and Password DEMO.

Select **"Record a process"** and start the Recorder. Navigate by Fast path **"AB"** to the address book and add a new address book record.

2

Return Values

When you added your address book record click on **"Return Values within the Process Recorder Popup"**

Select the **"Previously Assigned Number"** field (by clicking on it).

Then Click **"Resume"** on the process recorder popup screen.

Now click Stop to save your session as service request.

3

Go to: demo.steltix.com/studio

Sign on with the same user.

Click the Form Request icon and search for yours. Click on Address Book Revision and delete all default values. Search for the **"Previously Assigned Number"** within the Available Actions. It is turned on.

Enter ABNumber as name for the Variable.

Save your Form Request and get back to Home.

4

Add new Orchestration

Click on Orchestration and then on **NEW**.

Click on the plus sign and add your Form Request.

Click on Transformation of the just added Form Request.

Click on **"Add Inputs to Orchestration"**.

Then click on **Auto Map**.

5

Save Orchestration

Click on the **"End Node"** and select **"Orchestration Outputs"**.

Select the **"Previously Assigned Number"** and name the Output **"ABNumber"**.

Save your Orchestration. Run and test your Orchestration by clicking on the Start Node.

That's it!

You need more details or want to learn more about Orchestrations?

FOR SUPER SUCCESSFUL USERS

04

Use Apps On Any Device To Interact With JD Edwards

Scanning in your warehouse. Approving purchase orders on your mobile phone. Checking open invoices just before you step into your customer's office. Registration of faulty equipment in the field.

You are about to discover how to deliver JDE functionality to the end user in exactly the way that they want, using any device.

Let us share the last -and arguably the most important secret with you-: **The Super Successful JD Edwards User is 100% Happy!**

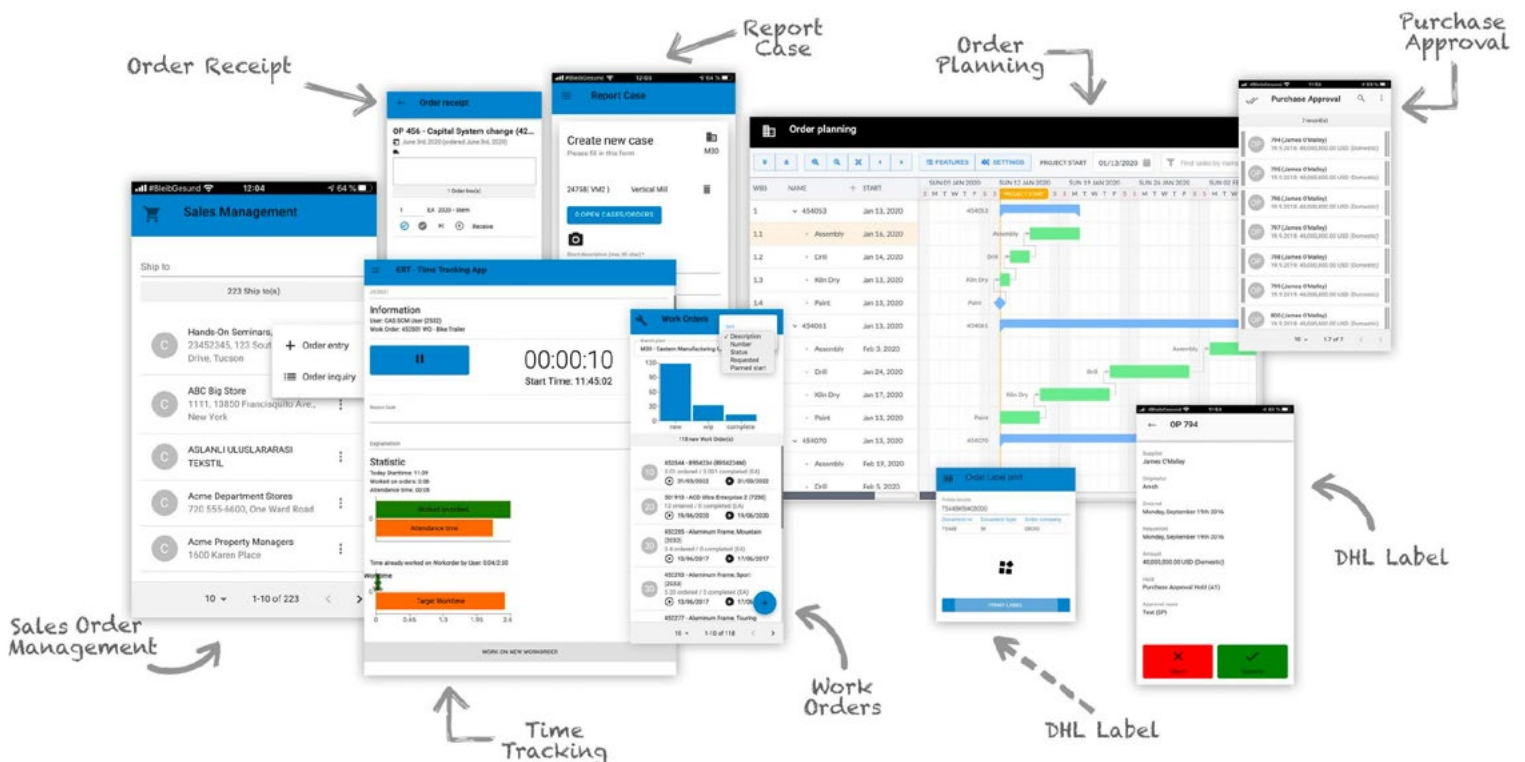
100% User Satisfaction. It's here.

The way you interact with JD Edwards is radically changing. Even more so, you may never work in JD Edwards ever again. What if...

You decide what functionality you use. What your screen looks like. How much (or little!) data you need to fill in. Use any device to interact with JDE. That moment has arrived.

Finally!

Join the JD Edwards User Revolution and let's execute an inventory transfer using your mobile phone!





TRY IT YOURSELF

1

Go to: appshare.steltix.com

Sign on with user demo to Server demo.steltix.com. Enter the Validation pin 00000 if needed and **click on Trial**

2

Inventory Management

Open Application **"Inventory Management"**

3

Process Item Number

Inquire on item number 220 and adjust inventory by any quantity. Enter an explanation and **click on Process.**

4

Verify Movement

If you like to verify your movement sign on to **demo.steltix.com** and **open P4114** and search for your movement by date

That's it!

Claim your free JDE Power App today!

FOR MORE INFORMATION